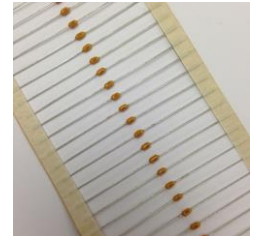


# RADIAL LEADS MONOLITHIC CAPACITOR

## HOW TO ORDER

CT42 - 104 M 17 Y 500 P 26  
 ↓ ↓ ↓ ↓ ↓ ↓ ↓ ↓  
 A B C D E F G H



A:

PRODUCT TYPE	
CODE	TYPE
CC42	CLASS I DIELECTRIC AXIAL LEADS
CT42	CLASS II DIELECTRIC AXIAL LEADS

B:

CAPACITANCE	
104	10*10 <sup>4</sup> PF
5R6	5.6 PF

C:

TOLERANCE	
B	±0.10pf
C	±0.25pf
D	±0.5pf
F	±1%
G	±2%
J	±5%
K	±10%
M	±20%
N	±30%
S	-50%~-20%
Z	+80~-20%
P	+100%~-0%

B,C,D FOR C<10PF  
 NPO: B,C,D,F,G,H,K,M  
 X7R: K,M,S,Z  
 Y5V/Z5U: M,S,Z,P

D: UNIT: INCHES

CODE
17
19

E:

TEMPERATURE CHARACTERISTICS			
N	COG (NPO)	0±30ppm/°C	(-55~+125°C)
B	X7R	±15%	(-55~+125°C)
Y(F)	Y5V	+30% -80%	(-25~+85°C)
E	Z5U	+22% -56%	(+10~+85°C)

F:

RATED VOLTAGE	
250	25V
500	50V
101	100V

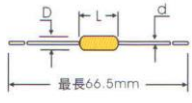
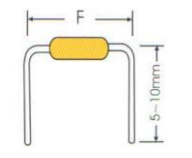
G:

PACKAGE STYLE		
T	Tape & Reel	
P	Ammo	
F BULK	Pitch (mm)	
	F2	5.08
	F3	7.5
	F4	10

H:

TAPE STYLE	
26	Tape width : 26mm
BLANK	Tape width : 52mm

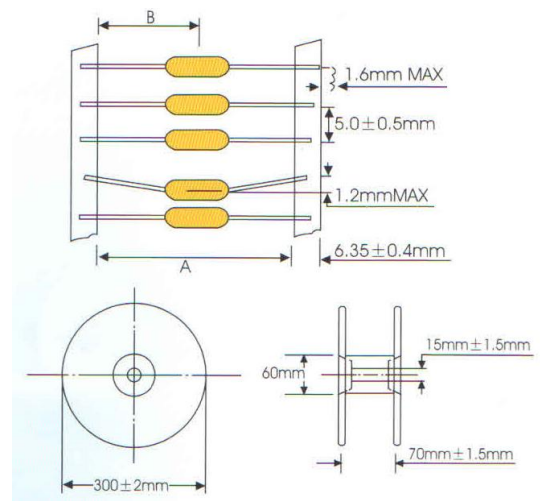
# SIZE CODE, CAPACITANCE AND VOLTAGE

	Size Code	Dimensions (mm)				Voltage	Capacitance Ranges (PF)			
		Lmax	Dmax	F(±0.6)			d(±0.05)	COG(NPO)	X7R	Y5V(Z5U)
 	17	5.0	2.5	5.08	10.0	0.45	25V 50V 100V	0R5~103	101~105 101~224 101~223	103~105 5 103~105 5
	19	7.5	3.0	7.50	10.0	0.45	25V 50V 100V		101~105 101~105 101~104	103~475 5 103~225 5

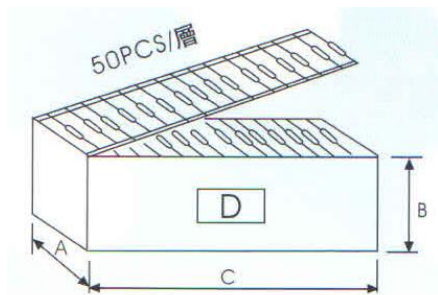
## ● PACKAGING STYLE

### TAPE AND REEL

TAPE STYLE	A	B
Tape width: 26mm	26 ± 1.5mm	13 ± 0.76mm
Tape width: 52mm	52 ± 1.5mm	26 ± 0.76mm



## ● AMMO PACKAGE



TAPE STYLE	A	B	C	D
52mm	81(±5)mm	72(±5)mm	258(±5)mm	Lable
26mm	50(±5)mm	72(±5)mm	258(±5)mm	

## ● PACKAGING QUANTITY

SIZE CODE	TAPE AND REEL	AMMO PACKAGE	BULK PACKAGE
17	5000	5000	1000(500)
19	2500(5000)	2500(5000)	500

\*\*Packaging according to the customer's requirement